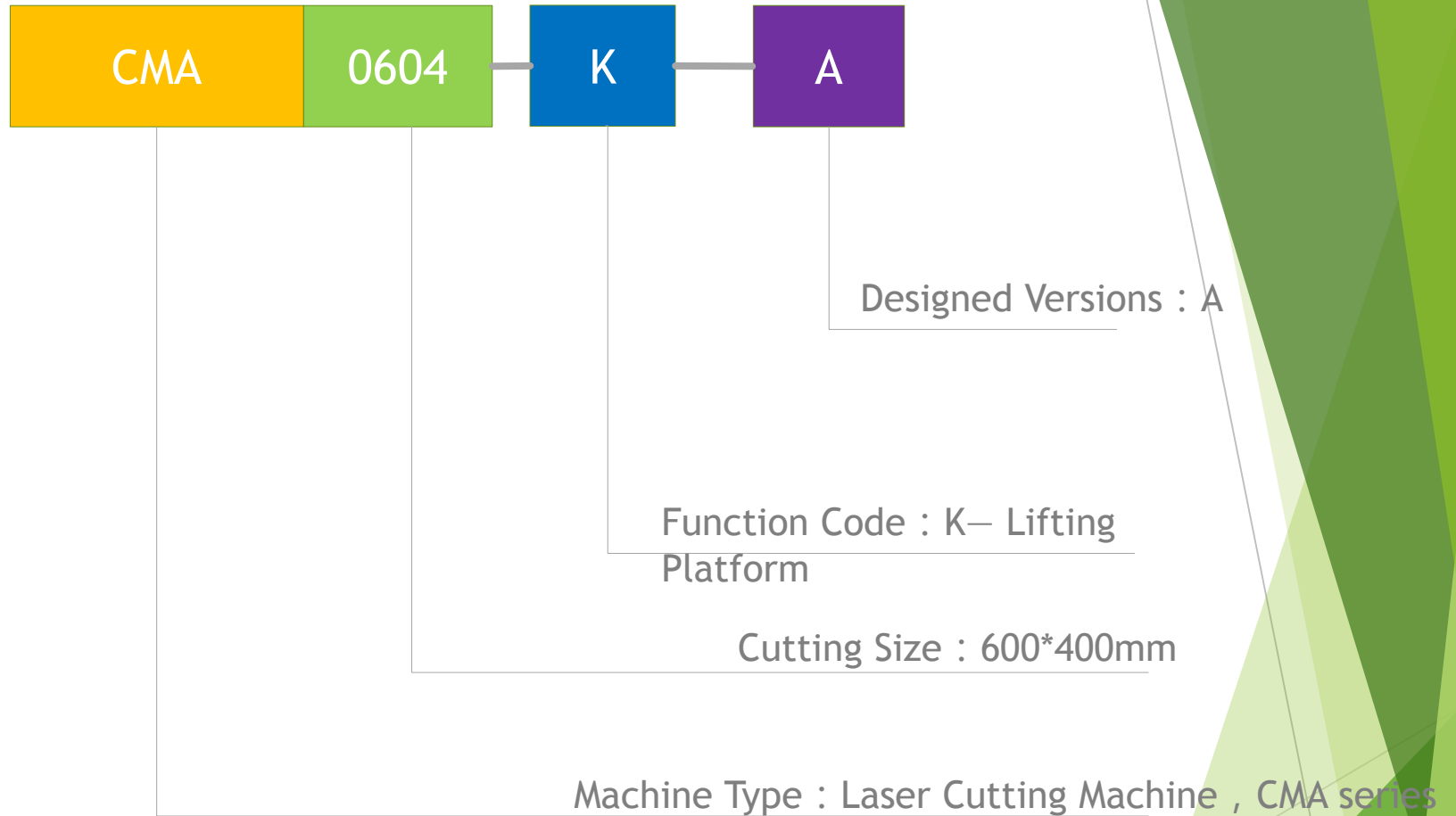




# Laser Cutting Machine (VenusLF CMA0604-K-A )

# Model Instruction



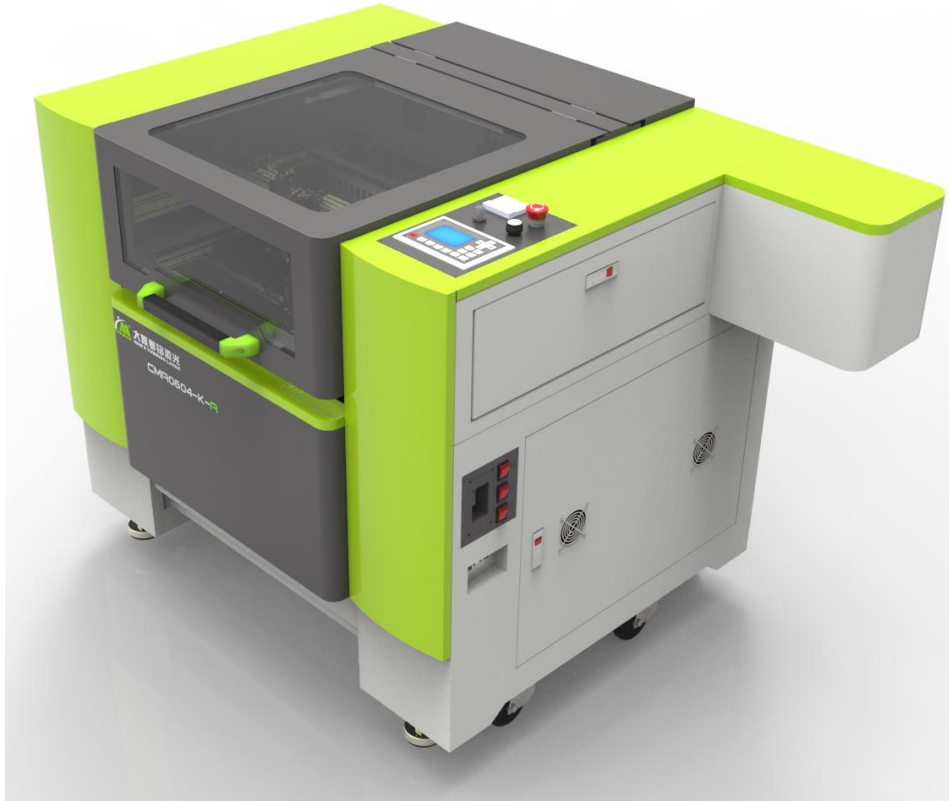
# Machine Introduction

- New appearance design
- Product serialization and universalization
- Official SGS certificate
- Hydro-dynamics design, which is easy to fix the material and exhaust the dust effectively
- 32 bit high-speed DSP component controller
- Full opto-coupler isolation system with High-speed differential input and output circuit design.



# Machine Introduction

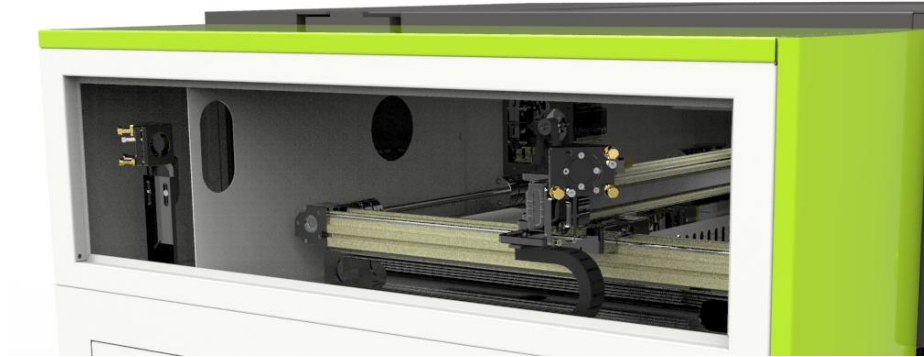
## Appearance& Color



**DATAWORKS**  
PRINT & CUT AUTOMATION

# Light path

Left and right end covers lengthened, which can be beneficial to adjust the light route.

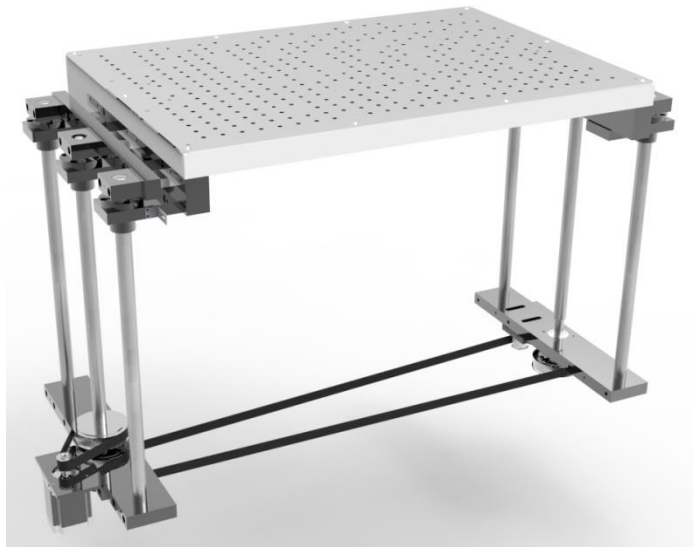


Ventilation design makes it easier to remove dust and smoke.



Extension cord is available in the machine, avoiding the cable in a mess, more safe and convenient

# Machine Configuration

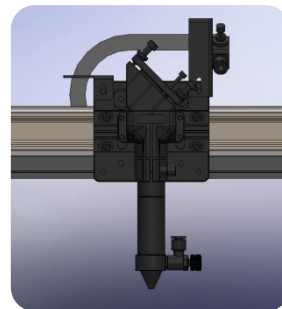


**Lifting platform** makes it is available to cut and engrave on special material

Mirror components can be adjusted from 0 to 90 degree which makes it easier to adjust the light path.



Four-pulley slider components design increases its durability.



New design on installation of Y axis motor, easy to uninstall



# Machine Configuration

Self-developed controller system and software.



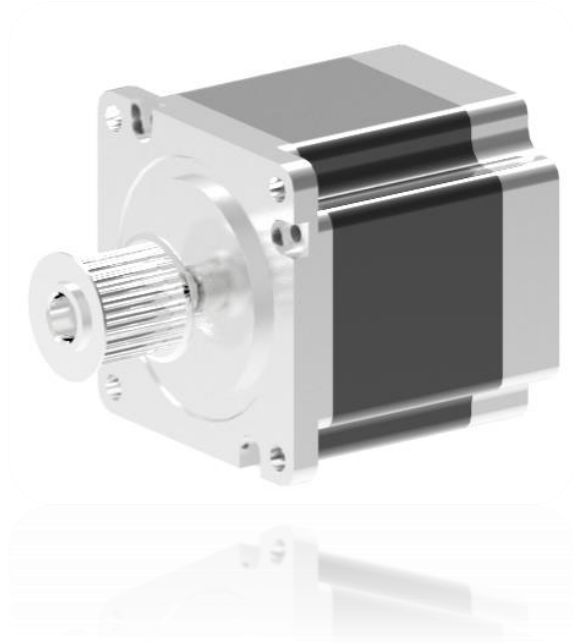
## Feature

- 1、 Adopting high-speed DSP controller, and S type accelerate and decelerate control algorithm, makes the machine can work with high speed; with the technology of luminous decay compensation, keeps stable cutting performance at different cutting position
- 2、 Transferring message through Ethernet(10/100M) and USD2.0; with auto-search communication mode
- 3、 True Color TFT Screen: both true color graphic and coordinate position to show where are the laser head is processing can be shown on the panel board
- 4、 Be able to modify the cutting parameters directly in different layers on the control panel(such as speed, power etc.), and save the parameter automatically for later use.
5. Supports the function of continuous cutting process after electricity outage, and processing time preview.



# Machine Configuration

Imported high performance step motor from Japan.



Chiller with dual-cycle system, temperature alarm, flow protection and water protection alarm.



# Parameters

Model	CMA0604-K-A
Working area	600mm×400mm
Laser generator type	CO2 laser generator
Laser power	80W、100W、130W
Transmission System	Synchronous belt
Maximum speed	30m/min
Repositioning accuracy	≤±0.1mm
Lifting height	350mm
Graphic format supported	AI, DXF, BMP, JPGE, PLT, DST, DSB, etc.
Working enviroment	Temperature: from 5 to 40 degrees Celsius. Humidity: from 5% to 80%, no condensation.
Total power	<3.5KW
Power supply	Single phase, 220-240V , 50/60Hz
Total weight	340Kg
Overall dimension	1530mmx1050mmx1100mm(Length of laser tube<1300mm) 1900mmx1050mmx1100mm(1300mm<Length of laser tube<1700mm)

## Applied material

Nonmetal material like wood, paper, leather, fabric, textile, plastic, rubber, bamboo, etc.



Crafts



Clothes, toys



Wooden products



Paper products



Advertising decoration